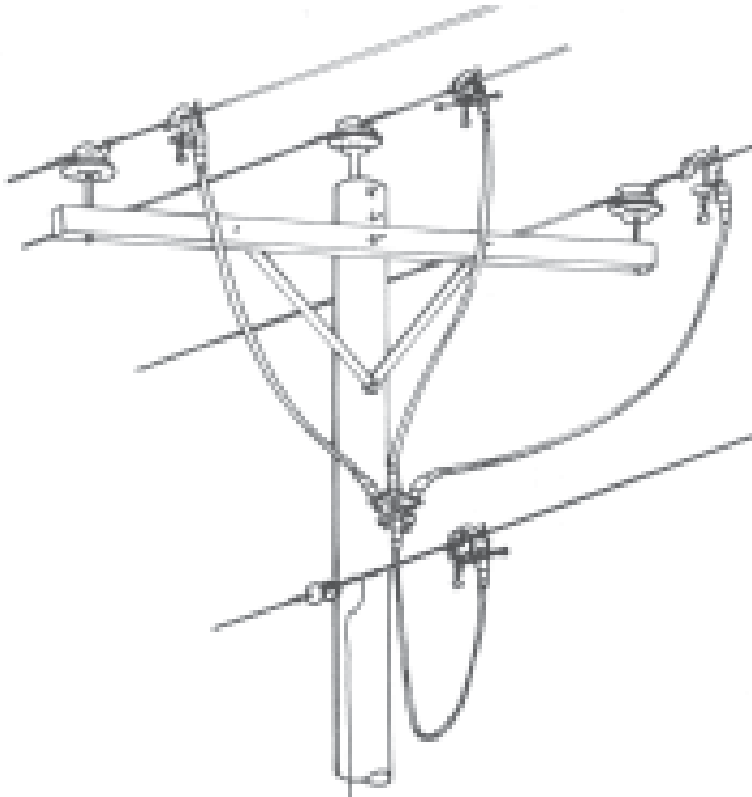


Four Way Grounding Set

CPGS4W



The four way connector ground set provides an excellent system for the grounding of a 3 phase system.

Grade 2 — 21kA 15 cycles

- Four Way Connector with Sleeves (1)
- 1.5" Serrated Jaw Clamps with Sleeves (4)
- Double Hanger Stud
- Contact Stud
- 1/0 Cubic Cable (34 feet)
- Ferrules (4 pair)
- Weight: 26 lbs.

Cementex
